

TITON XLX WORK CLASS ROV



IHPU

Compensator volume (dirty pack): 6.5 L
Integrated Clutch Control:

68 L/min @ 3,200 PSI

Depth Rating 4,000 m

Vehicle dimensions

Length 3.22 m

Width 1.80 m

Height 1.95 m (2.15 m w/skid)

Speed

Forward Speed : 3+ knots

Lateral Speed: 2 knots

Bollard Pull (Nominal)

Forward 1,100 kgf

Lateral 1,100 kgf

Vertical 900 kgf

Payload Capacity 250 kg

Manipulators

Schilling Titan 4 seven-function

Schilling Rigmaster five-function

Camera

Manufacturer Kongsberg

Model OE 15-102 Near SIT

OE 14-366 Colour Zoom

OE 1358 & 14-108 (mini)

Light

Manufacturer: Deep Sea Power & Light

Model: Sea Arc HID, Deep Multi Sealite

Propulsion/Speed

Power Pack (Shaft/HP) 150

Thruster Horizontal 4 x 380 mm

Thruster Vertical 4 x 300 mm

Heading Control +/- 2.0 °

Pitch and roll control +/- 5.0 °

Depth control +/- 0.15 m

Altitude control +/- 0.15 m

Under-slung 3,000 kg

Aft load Capacity 600 kg

TMS

Top-hat design, Type IV TMS

Tether capacity 440 m

LARS

SWL 19.5 t in water, 13 tin air

Outreach 5.5 m



GENERAL DESCRIPTION

Type: AHTS Construction and Field Support Vessel

Design: STX Europe AH04
 Year of build: 2010
 Accommodation: 90 persons
 Gross Tonnage: 8252
 Net Tonnage: 2476
 Area of Operation: Worldwide

Classification

DNV class: 1A1 Tug Supply Vessel SF COMF-V () E0 DYNPOS-AUTR NAUT-OSV (A) CLEAN DESIGN DK (+) HL (.) TMON

TECHNICAL SPECIFICATION

Main Dimensions

Overall length: 109.4 m
 Length between pp: 98 m
 Breadth: 24 m
 Depth: 9.8 m
 Draft: 7.8 m

Winches

Main

1 x BRATTVAAG Water Fall triple drum (SL500W-3)

Towing / working Drums - 500 t

1 x Declutchable towing drum
 1,500 mm Ø x 3,750 mm Ø x 4,100 mm length
 1 x Declutchable working drum
 1,500 mm Ø x 3,750 mm Ø x 4,100 mm length
 Wire capacity 6,700 m of Ø 76 mm each

Anchor handling Drum - 500t

1 x Declutchable ah/wire drum
 3,500 mm Ø x 5,400 mm Ø x 8,200 mm length
 With dividing flange socket part:
 18,700 m of Ø 76 mm wire
 2 x BRATTVAAG Secondary winches
 170 t pull @ 0 - 23 m / min

Additional

2 x Hydraulic windlass / mooring 20 t pull
 2 x Hydraulic tugger 24 t pull

Deck Space

Main Deck Area: 1,070 m² @ 10 t / m²
 Deck Material: Timber
 Chain Locker: 1,150 m³
 Moonpool dimension: 7 m x 7 m
 Size of ROV hangar (m²): 25m x 35m

Speed

Maximum: 17.5 knots
 Economic Transit: 12 knots

Communication Equipment

VSAT: 1 set

Cargo capacity summary

Fuel oil: 2417.2 m³
 Ballast water: 3713.7 m³
 Rig chain lockers: 1194.3 m³
 Slop: 18.4 m³
 FW Tank capacity: 956.4 m³
 Number of FW tanks: 6

Fuel consumption

In Port: 3 m³ / 24 hrs
 Transit: 23 m³ / 24 hrs
 DP: 8 m³ / 24 hrs
 FW Making Capacity: 30 m³ / 24 hrs

Propulsion

Main engines: 2 x Wartsila 16V32 - 7680 kW each/2 x Electric drives 3500 KW Each
 Total output: 25760 + 200 kW
 (Emergency Generator)

Generators: 4 x Wartsila 8L26 - 2600 kW each

Drive type shaft/diesel-electric:
 2 x Siemens 1FJ3 905-10 - 4444 kVA each
 Fuel type MGO/HFO: MGO

Thrusters

Bow thruster:
 2 x Wartsila/Lips FT 275 - 1500 kW each
 Azimuth thruster:
 Wartsila/Lips FS225 MNR - 1500 kW
 Stern thrusters:
 2 x Wartsila/LIPS - 1200 kW each

Generators

Shaft generators make: Siemens 1FJ3 905-10
 Shaft generators capacity: 4444 kVA each
 Aux generators Make: Wartsila 8L26
 Aux generators capacity: 2600 kW each
 EM generator make: Nogva Scania
 EM generator capacity: 200 kW

Roll reduction system

Roll reduction system type: Stab tanks
 Number of roll reduction tanks: 2

Anti heeling system

Number of tanks: 4
 Size of tanks:
 DBWT5PS - 180.9 m³, DBWT5SB- 180.9 m³,
 DBWT6PS - 166.3 m³, DBWT6SB- 163.6 m³,
 Number of pumps: 2
 Capacity of pumps: 1400 m³/hour

Helicopter deck

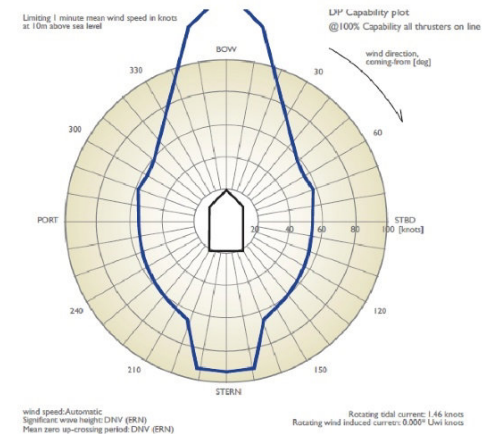
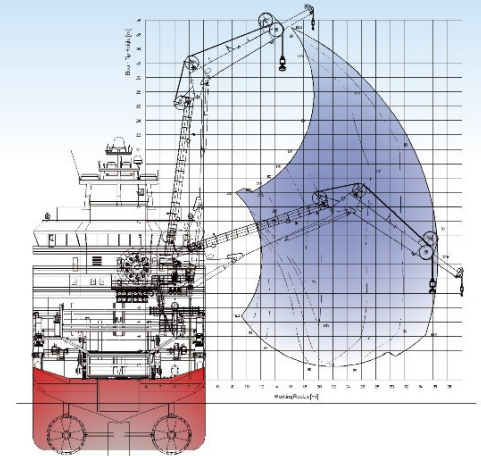
Type: bow
 Approvals: dnv-heldek-sh
 Diameter: 19.5m
 Dimensioned for: super puma

Accommodation

Total number of bunks: 90
 Crew single Cabins: 20
 Crew double Cabins: 35

CRANES

Type: NOV AHC knuckle boom
 SWL: 250t @ 13 mtrs, 20t @ 40mtrs
 Wire type: 96mm Flexpack
 35x7 RHOL MBL 7810 Kn
 Wire length: 2478M-2600M
 Tugger winch (numbers SWL): 10t - 80004267 - SNV84403503-SNV84403504
 SWL lift internal on deck (Harbour): 250t @9M
 SWL External deck/sea (subsea lift): n/a
 SWL External deck-sea AHC lift: n/a
 SWL Sealift (deck to deck lift): 124t @ 16M
 Personal lift capacity: 1t



DP SYSTEM

Class definition:

E0 DYNPOS-AUTR NAUT-OSV(A)

Type: Class 2

DGPS: Seatex DPS 132 & Seatex DPS 200

Diff correction:

IALA and Spot beam 1 & 2 and XP

HPR: Hipap 500

Fan beam: MDL

Transponders: Yes