



DP3 140m IMR Vessel



GENERAL DESCRIPTION

Type: MP Subsea Construction Vessel

Design: Skipsteknisk AS
Delivery: Q1 2015
Accommodation: 150 persons
Net Tonnage: 2671 t

Main functions

Deepwater heavy structure lift and subsea installation works.
Deepwater umbilical/flexible pipe/cable flex-lay.
ROV Support.
Saturation diving support (Optional).
IMR (Inspection, Maintenance and Repair).

TECHNICAL SPECIFICATION

Main Dimensions

Overall length:	140.75 m
Length between p.p:	127.85 m
Breadth molded:	29.0 m
Depth main deck:	12.8 m
Draft (max):	8.5 m

Classification

DNV+ 1A1, ICE-E, SPS, DPS3, CRANE, HELDK, BIS, COAT-PSPC(B), CLEAN, E0, NAUT-OSV(A), DK(+), COMF-V(3)C(3) CSA, Special Purpose Ship (2008), Ice Class B, DP-3, Lifting Appliance, Helicopter Facilities, PSPC(B), In Water Survey CSM, AUT-0, OMBO, Clean, COMF (NOISE 3), COMF (VIB 3)

TECHNICAL SPECIFICATION

Deck Equipment

2 × Windlass/Mooring winches fwd.-
Hatlapa
2 × Mooring winches aft-Hatlapa
2 × Provision cranes – Cargotech/
MacGregor 3t

Deck Space

Deck Material: steel/wood
Moon pool : 7.2m x 7.2m
Main Deck Area: 1900m²

DP System

DP III : A redundant Dynamic
Positioning (DP) system,

NAV/Com

1 × MF/HF SSB Simplex radio
Telephony Station 150 W.
2 × EPIRB Cospas/Sarsat free-float
beacon .
2 × Radar transponders for life-
raft/boat (9 GHZ)
3 × Portable waterproof VHF radios.
Satellite communication, mobile
telephones/fax
VHF / UHF and mobile telephones/fax/
VHF/ UHF
Internal communication systems
1 × complete PA system and 1 ×
telephone system to be installed.
Infrastructure / LAN

Power & Propulsion

Main: 6 sets, 4 x 3850 kW +2 x 2870kW
Em.Gen : 1 x 660 kW

Mooring & Anchor handling Winch

Two individual operated winches /250t
AR rope reel diameter: 92mm
Length: 3250m

Thrusters

Stern :
2 × azimuth thrusters Max.Continuous
rating : abt. 4500 kW each
Bow:
2 × tunnel thrusters forward. Rating
abt. : 2200 kW
1 × Retractable azimuth thruster.
Rating : 2200 kW

Rescue

Life boat
2 × fiberglass reinforce plastic, totally
enclosed type lifeboats.
1 × life boat on each side, with capacity
of 50% (75persons).
2 × Fast Rescue Craft/ Man Over
Board Boat.
2 × davit launched type inflatable life
rafts , with capacity of 20 persons.

Accommodation

150 persons
28 single cabins / 39 double cabins / 11
cabins with 4 beds

Helicopter Deck

Diameter deck : 22,2m
Max. take-off-mass: 12,8t
Aircraft type : Sikorsky S-92,
S-61 and Euro Copter EC225
Super Puma MKII.

Speed

Maximum Estimated full speed of 12
knots
Transit Speed of 11 knots

Tank Capacities

Marine Gas oil/diesel oil, abt. : 2800m³
Potable water, abt. : 750m³
Water ballast, abt. : 7300m³
Rig chain lockers abt. : 1000m³

ROVs

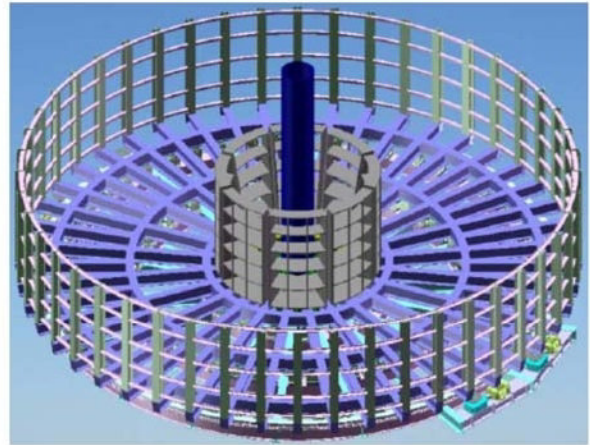
Schilling UHD 78/79:



LARS: Active Heave Compensated
HPU: 200 Hp system 147KW
Depth Rating: 3000m
Auto function: Stationkeep (DP)
Auto Heading / Depth / Altitude/Roll/Pitch
Payload: 250 Kg
TMS: With 850m tether Capacity
Manipulators: 7 function Schilling Titan4
5 function Schilling Rigmaster
Vehicle dimensions: Length 3500 mm
Width 1900mm
Height 2100mm
Speed: Fwd/Aft 3.2 knots
Lateral 3.2 knots
Vertical 2.5 knots
Bollard pull: Forward/Aft, 1200 Kg
Lateral, 1200 Kg
Vertical (Up/Down), 1000 Kg
Lights: 8 × Variable 120VAC/ 250W
Camera: 5 × Camera
1 × TITAN 4 Wrist camera
Pan & Tilt: 2 × Electric Pan & Tilt Unit
Valve Pack: 2 × 8-function

CAROUSEL

1x2500 tonnes Basket Type



Basket General

Outer diameter: 20.4m
Inner core diameter: 6.0m
Basket height (net): 4.0m
Volume abt.: 150m³
Maximum speed abt.: 1.0 rpm
Rollers: Fixed to foundation
Weight: Total Weight within 450Te

Drive System

Motor specification: 4 x 55kW, totally 220kW
Fabricator: ABB
Drive Chain: Steel roller chain or similar

Loader Arm

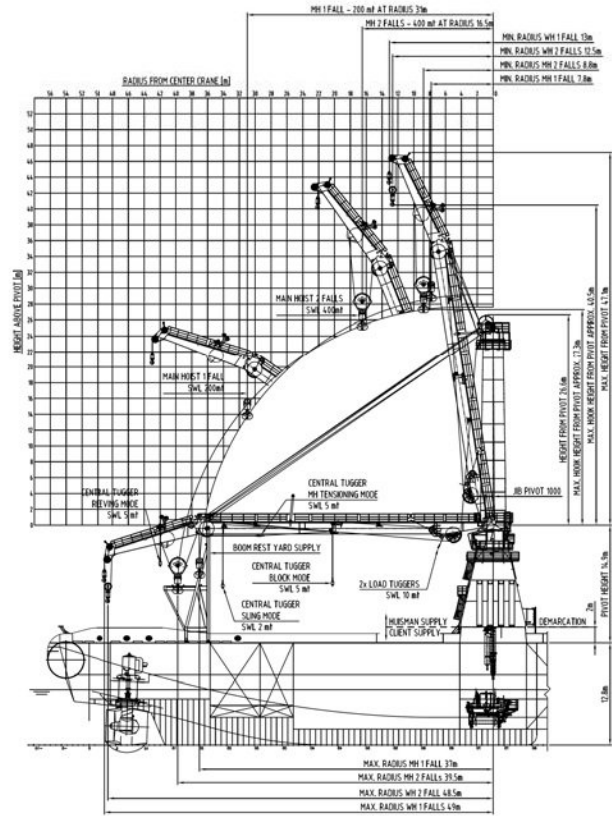
Maximum product diameter: 17" (432mm)
Designed for product MBR: 0.5m

Performance

Linear Speed: 1000m/Hr requested

CRANES

1 off 400 Te HUISMAN AHC Crane



Master Type Crane
 SWL (2 falls) @ 16.5m: 400Te
 SWL (1 fall) @ 31.5m: 200 Te
 Dynamic factor: 1.1

Working Range
 Single line: 7.8-37.0 m
 2 falls: 8.8-39.5 m

Storage Capacity
 Hook travel, single line: 3000m

Main Hoist Wire Rope
 Wire rope diameter: 92mm
 Wire rope MBL: 650Te

