

OFFSHORE  
SOLUTIONS  
UNLIMITED™



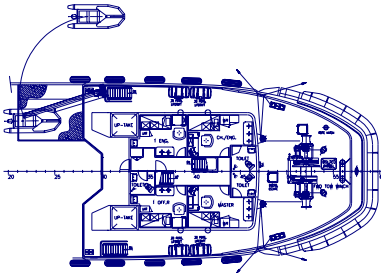


### MAIN PARTICULARS:

LENGTH OVERALL	36,6 m
LENGTH BP	30 m
BEAM	11,2 m
DEPTH	5,5 m
LIGHT DRAFT	3,4 m
LOADED DRAFT	4,5 m
SUMMER FREEBOARD	1,00
GT	497 Mt
NT	149 Mt

### CAPACITIES:

BALLAST	25 m <sup>3</sup>
FUEL OIL	210 m <sup>3</sup>
FRESH WATER	50 m <sup>3</sup>
LUBE OIL	5 m <sup>3</sup>
REC-OIL	169 m <sup>3</sup>
HYDRAULIC OIL	5 m <sup>3</sup>
SEWAGE	1,0
DIRTY OIL	1 m <sup>3</sup>
FOAM	17,6 m <sup>3</sup>
DISPERSANT	11,6 m <sup>3</sup>



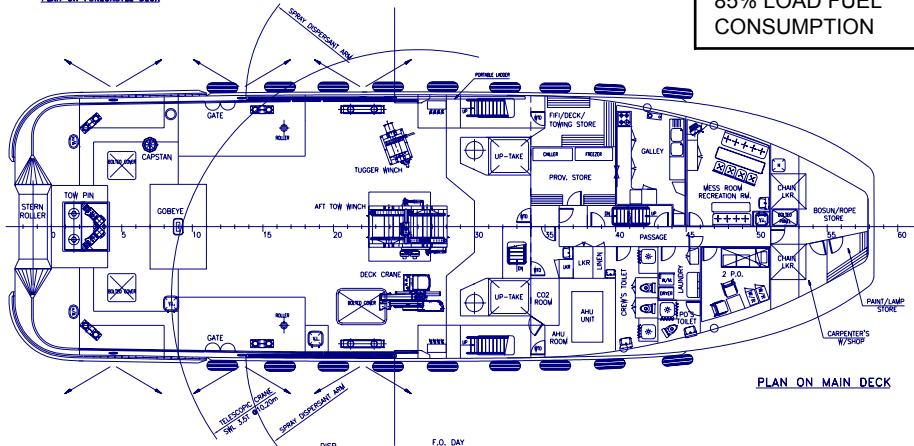
PLAN ON FORECASTLE DECK

### CARGO DECK:

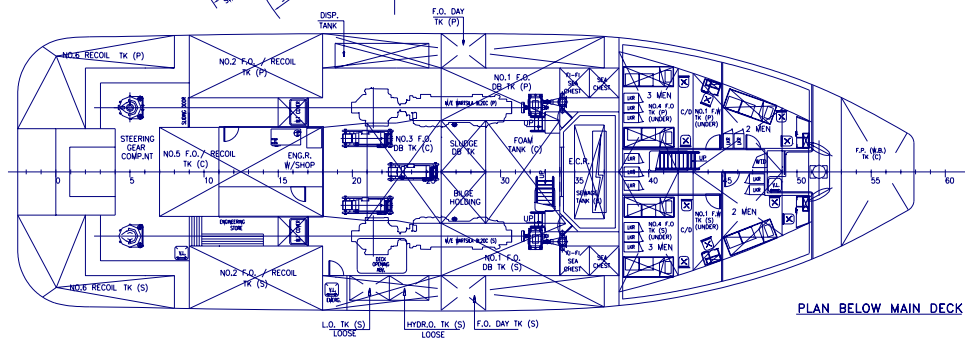
MAX LOAD ON DECK	290 t
STRENGTH	5 T/m <sup>2</sup>
LENGTH	13,2 m
WIDTH	11,2 m
CLEAR AREA	147,8 m <sup>2</sup>

### PERFORMANCE:

MAXIMUM SPEED	13.87(average) knots
CRUISING SPEED	10 knots
ECONOMICAL SPEED	8 knots
MAXIMUM FUEL CONSUMPTION (100%)	6,6 MT/day
85% LOAD FUEL CONSUMPTION	5 MT/day



PLAN ON MAIN DECK



PLAN BELOW MAIN DECK

# S/V Scapino



<b>MACHINERY:</b>	<i>Manuf./Type</i>
MAIN ENGINES	2x Watsila 9L20
POWER	2x 1620 @ 1000rpm (MCR) Kw
REDUCTION GEARS	2x Watsila SCV 50 4.44:1
PROPELLERS	2x CPP 2500mmx225rpm
STEERING & RUDDERS	Tenford-RRM - no.2 spade type
BOW THRUSTER	HRP-100Kw - 620mm tunnel dia.
AUX. GENERATORS	Volvo Penta-TAMD103A 3x210 KVA 3x415V - 50Hz

<b>SPECIAL EQUIPMENT:</b>	<i>Type:</i>
EXTERNAL FIFI	Kvaerner 2fgec 280
FIFI PUMP	OGF 2x1350m <sup>3</sup> /h @150mcw
WATER MAKER	Tecnicomar MD1000 - 3T/day
DECK CRANE	Palfinger PK-32080 MBS - 3.5T at 10,2 outreach
SURVIVAL CRAFT	Viking 20 DK (2x20 Pers)
RESCUE BOAT	Viking SV400 (1x9 Pers)
OIL DISPERSANT SYSTEM	Kashiwa - meter pump + SS 2 lateral dispers. arm

