

# 165' MINISUPPLY



OFFSHORE SOLUTIONS UNLIMITED



165' MINISUPPLY

## MAIN PARTICULARS

LENGTH OVERALL	167 ft.	51 m
LENGTH BP	157 ft.	48 m
BEAM	40 ft.	12 m
DEPTH	13 ft.	4 m
LIGHT DRAFT	6 ft.	2 m
LOADED DRAFT	10 ft.	3 m
SUMMER FREEBOARD	2 ft.	1 m
LIGHTSHIP	541 LT.	551 MT.

## CAPACITIES

DRILL WATER	105,646 USG	400 m <sup>3</sup>
POTABLE WATER	8,698 USG	33 m <sup>3</sup>
FUEL	46,946 USG	178 m <sup>3</sup>
LIQUID MUD	1,984 BBLS	315 m <sup>3</sup>
DRY BULK	0 ft. <sup>3</sup>	0 m <sup>3</sup>
BRINE	0 USG	0 m <sup>3</sup>
BASE OIL	924 USG	3 m <sup>3</sup>
METHANOL	2,310 BBLS	367 m <sup>3</sup>
DEADWEIGHT	860 LT.	876 MT.

## CARGO DECK

TONNAGE	620 LT.	631 MT.
STRENGTH	850 lbs./ft. <sup>2</sup>	8,300 MT./m <sup>2</sup>
LENGTH	120 ft.	37 m
WIDTH	35 ft.	11 m
CLEAR AREA	4,200 ft. <sup>2</sup>	390 m <sup>2</sup>

## TONNAGE

GRT	612 tons
NRT	224 tons

## MACHINERY

MAIN ENGINES	2 KT 38 Cummins
BRAKE HORSEPOWER	2400
REDUCTION GEARS	Twin Disc
PROPELLERS	Controllable Pitch
RUDDERS	2 Spade Type
SHAFT GENERATORS	N/A
AUXILIARY GENERATORS	2-99 Kw
EMERGENCY GENERATOR	N/A
BOW THRUSTERS	Stern & Bow
STERN THRUSTER(S)	N/A
LIQUID MUD CIRCULATION	Mission Magnum 5x4

## TOWING & ANCHOR HANDLING

TUGGER WINCHES	0 x 0 LT. / MT.
CAPSTANS	N/A 0 LT. / MT.

## PERFORMANCE

MAXIMUM SPEED	12 knots	
CRUISING SPEED	8 knots	
MAXIMUM FUEL CONSUMPTION	120 USG/Hr	11 m <sup>3</sup> /24 Hrs
CRUISING FUEL CONSUMPTION	76 USG/Hr	7 m <sup>3</sup> /24 Hrs

## DISCHARGE RATES

DRILL WATER	400 USG/min @ 80 ft.	91 m <sup>3</sup> /Hr @ 24 m
POTABLE WATER	400 USG/min @ 80 ft.	91 m <sup>3</sup> /Hr @ 24 m
FUEL	400 USG/min @ 80 ft.	91 m <sup>3</sup> /Hr @ 24 m
LIQUID MUD	700 USG/min @ 150 ft.	159 m <sup>3</sup> /Hr @ 46 m
DRY BULK	0 ft. <sup>3</sup> /Hr @ 0 PSI	0 m <sup>3</sup> /Hr @ 0 bar
BRINE	0 USG/min @ 0 ft.	0 m <sup>3</sup> /Hr @ 0 m
BASE OIL	0 USG/min @ 0 ft.	0 m <sup>3</sup> /Hr @ 0 m
METHANOL	400 USG/min @ 80 ft.	91 m <sup>3</sup> /Hr @ 24 m

## ACCOMMODATIONS

CABINS/BERTHS	4 / 16
OFFICERS	2
CREW	2
VIP	0
PASSENGERS	15
LOUNGE	12
MESS	12

## ELECTRONICS & CONTROLS

JOYSTICK	N/A
DEPTH SOUNDER	Datamarine
DYNAMIC POSITIONING	Kongsberg Simrad SDP01
GPS	JRC
GYRO	N/A
RADAR(S)	JRC
SSB	SEA235
INTERNET E-MAIL	Globe Wireless
WEATHER RADIO	XM

## SPECIAL EQUIPMENT

CRANE	N/A 0 LT @ 0 ft. - 0 MT @ 0 M	
EXTERNAL FIFI	1 @ 2400 GPM	
SURVIVAL CRAFT	N/A	
WINDLASS	Hydraulic/Cable 1 inches 1,200	25 mm 366
RESCUE BOAT	N/A	
WATER CAPACITY	0 GPM @ 0 ft. @ 0 psi	0 M3/Hr @ 0 M. @ 0 bar
NUMBER OF MONITORS	1	
EEP	Equipped	

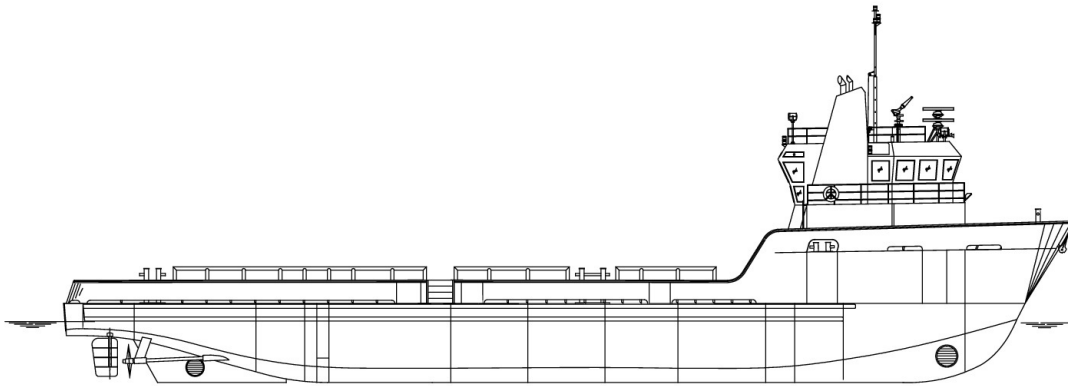
## DOCUMENTATION

CLASS	166 FT. PSV / DP
FLAG	United States
SOLAS	N/A
USCG	USCG Sub L, OSV
YEAR BUILT	2001
OFFICIAL NUMBER	1103037
RADIO CALL SIGN	WDA7444
BUILDER	Bollinger Shipyard

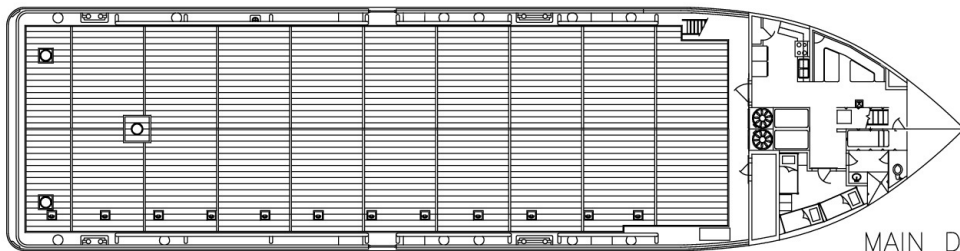
This specification is preliminary and subject to change without notice. Exact tank capacities, deadweight, deck cargo capacity and other figures that have been calculated and may change when the actual vessel is delivered.



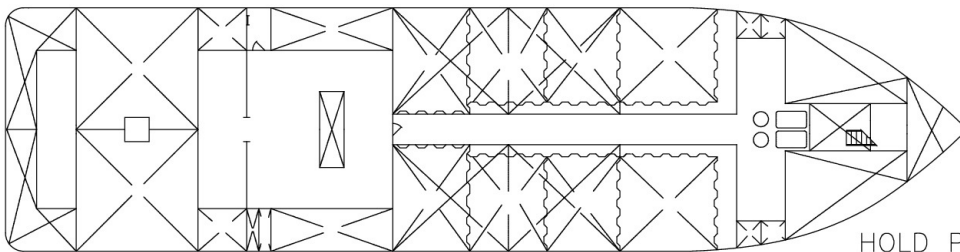
**boats4ever.com**  
Maritime Consulting, Surveys, Management



OUTBOARD PROFILE



MAIN DECK



HOLD PLAN