

85M 6000BHP DP-2 Subsea Support/Maintenance Vessel



OFFSHORE SOLUTIONS UNLIMITED

PRINCIPAL PARTICULARS

Length Overall	: 85.00M
Length BP	: 77.75M
Breadth Moulded	: 22.00M
Depth Moulded	: 8.00M
Draft Moulded	: 6.30M
Deadweight	: 3100T (approx.)
Gross Tonnage	: 4671T (approx.)
Trial Speed	: 12.5 knots (approx.)
Moon Pool	: 8.0m x 8.0m
Heli-Deck	: capable of the reception of a Sikorsky S61
Class Notation	: ABS + A1 (E) OFFSHORE SUPPORT VESSEL(Supply-HNLS,FFV1), + AMS+ACCU+DPS-2, SPS, RW, HELIDK.

MACHINERY/PROPULSION

Main engine	: 2 x 3000bhp@800rpm Niigata 6L28AH
Propulsion system	: 2 x Azimuth thruster
Bow thruster	: 2 x 800kW transverse type Kawasaki of approx. 12t thrust
Main generator	: 3 x 800kW diesel driven Caterpillar
Shaft generator	: 2 x 1500kW shaft Alternator
Emergency diesel generator	: 1 x 192kW Cummins

CARGO CAPACITY

Deck Cargo	:	800t
Clear Deck Area	:	730M ²
Deck Loading	:	7.5t / M ²
Fuel oil	:	~1150M ³
Fresh water	:	~ 740M ³
Drill water	:	~1750M ³
Water Ballast	:	~280M ³
Mud/Brine	:	~ 410M ³
Heeling	:	~ 440M ³
Dry Bulk Cement (4 x 2000ft ³)	:	~ 226M ³

DISCHARGE RATES

Fuel oil	:	2 x 150M ³ /hr @ 75M head
Fresh water	:	1 x 150M ³ /hr @ 75M head
Drill water	:	1 x 150M ³ /hr @ 75M head
Mud	:	2 x 70M ³ /hr @ 85M head

SUPPLY & DRAINAGE PLANT

Freshwater hydrophore plant	:	1 x 15M ³ /hr @ 60M head
Seawater hydrophore plant	:	1 x 15M ³ /hr @ 60M head
Hydrophore plant standby plant	:	1 x 15kW @ 2950rpm
Freshwater maker	:	2 x reverse osmosis type of 30 t/day
Sewage holding & treatment system	:	for 200 persons
Oily bilge water separator	:	1 x 1.0M ³ /hr with oil content less than 15 ppm
Hot water calorifier	:	2 x 80kW of 1000L c/w 2 circulating pump

All information contained within this document is for reference only and shall not be binding on the Company whether acted on or otherwise, unless the same is incorporated within a written contract or agreement signed by the Company.

EXTERNAL FIRE FIGHTING SYSTEM

External FiFi-1 c/w water spray	
Fire monitor	: 2 x 1200M ³ /hr
Fire pumps	: 2 x 2000M ³ /hr @ 14 bar
Independent sea chest	: 2 sets
Foam tank capacity	: 20M ³
Dispersant capacity	: 20M ³

INTERNAL FIRE FIGHTING SYSTEM

CO₂ system in engine room
 Fire/smoke detection and alarm system
 Portable Fire Extinguishers
 Fixed pressure water-spraying & water-mist fire extinguishing system in engine room

DYNAMIC POSITIONING SYSTEM

- Meets the DPS-2 class notation of ABS
- 1 x DGPS
 - 1 x Laser Reference System
 - 1 x HIPAP 500 Position Reference System
 - 3 x wind sensor
 - 3 x vertical reference system
 - 3 x gyro sensors
 - 2 x UPS
 - 1 x lightweight taut wire (500M)

NAVIGATION EQUIPMENT

X-band radar range 96NM	:	1 set
S-band radar range 96NM	:	1 set
Eco sounder	:	1 set
GPS plotter	:	1 set
Gyro compass	:	3 sets
Magnetic compass	:	1 set
Autopilot & steering gear	:	1 set
Weather facsimile receiver	:	1 set
Doppler speed log	:	1 set
AIS	:	1 set
MF/HF Transceiver (GMDSS)	:	1 set
Satellite EPIRB (GMDSS)	:	1 set
2-way portable VHF radios (GMDSS)	:	3 sets
SART	:	2 sets
Navtex Receiver (GMDSS)	:	1 set
Anemometer	:	3 sets



LIFE SAVING EQUIPMENT

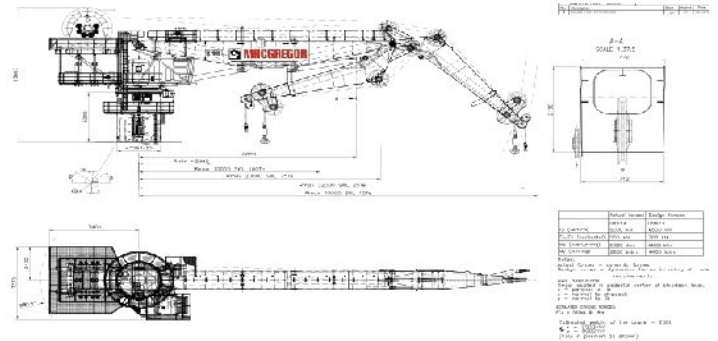
Life raft	:	8 x 25 men
Life buoy-ring	:	12 sets
Lifejackets	:	250 sets
Fireman Outfit	:	6 sets
EEBD	:	8 sets
First aid kit	:	1 set
Lifeboat c/w davit	:	2 sets (SOLAS approved)
Immersion suits	:	204 units
Air breathing apparatus	:	4 sets

ACCOMMODATION

4 x 1 man cabin	:	4 men
10 x 2 men cabins	:	20 men
44 x 4 men cabin	:	176 men
Total	:	200 men
1 x hospital	:	2 men
Chiller	:	35m ³ (approx.)
Freezer	:	35m ³ (approx.)
Provision Store	:	50M ³

DECK/AHL EQUIPMENT

Windlass	:	1 x electro hydraulic type of 16 t @ 12M/min for 58mm dia. chain
Capstan	:	2 x electro hydraulic type of 10 t @ 15M/min
Anchor	:	2 x high-hold type, stowed in anchor-pockets each of 3240kg
Tugger winch	:	2 x electro-hydraulic type of 10 t @ 15M/min
Crash/ Cargo Rail	:	300mm N.B. heavy pipes shall be provided on main deck (P&S) be approx. 2500mm to top of pipes
Main crane	:	1 x electro hydraulic driven crane of 100t with AHC function
Deck crane	:	1 x marine crane of 3 t S.W.L @ 14.0M
Gangway	:	1 x aluminium gangway about 6.0 metre length
Mooring System	:	4 point mooring system



OFFSHORE SOLUTIONS UNLIMITED