



DAMEN FAST CREW SUPPLIER[®] 2610

"FCS 2610"

GENERAL

HULL MATERIAL	Aluminium
SUPERSTRUCTURE	Aluminium
BASIC FUNCTIONS	Crew / Patrol duties
CLASSIFICATION	Bureau Veritas I ✱ Hull ● MACH Light Ship / Fast Utility Vessel Sea Area 2 Up to category 3
MCA	

DIMENSIONS

LENGTH O.A.	25.75 m
BEAM O.A.	10.40 m
DEPTH AT SIDES	2.90 m
DRAUGHT MAX	1.75 m

TANK CAPACITIES

FUEL OIL	12.00 m ³
FRESH WATER	1.50 m ³
WASTE WATER	0.30 m ³

PERFORMANCES (TRIALS)

SPEED	20.0 – 25.0 kn.
RANGE	Up to 600 nm.

PROPULSION SYSTEM

MAIN ENGINES	2 x MTU/ Caterpillar
TOTAL POWER	Up to 1800 bkW (2410 bhp)
GEARBOXES	Reintjes ZWVS 440/1
PROPELLERS	Fixed-pitch propellers

ELECTRICAL EQUIPMENT

NETWORK	24V d.c., 230V
GENERATOR SET	1 x Caterpillar C2.2 NA
CAPACITY	16.0 kW / 20.0 kVA

DECK LAY-OUT

ANCHOR EQUIPMENT	Anchor according to class
FENDERING	Rubber "D" type and foam fender
DECK CRANE	Heila 5-2S up to 20-2S
DECK SPACE	90.0 m ²
DECK CARGO FWD	5.0 ton up to 15 ton
MAX DECK LOAD	1.5 ton/ m ²

AUXILIARY EQUIPMENT

BILGE PUMP	Electric 24V
FIRE FIGHTING	Novac system in engine room
BOW THRUSTERS	2 x 45 kW

LIFE SAVING EQUIPMENT

LIFE BUOYS	2
LIFE JACKETS/SUITS	15
LIFE RAFTS	1 x 16 persons
FIRE EXTINGUISHER	According to class

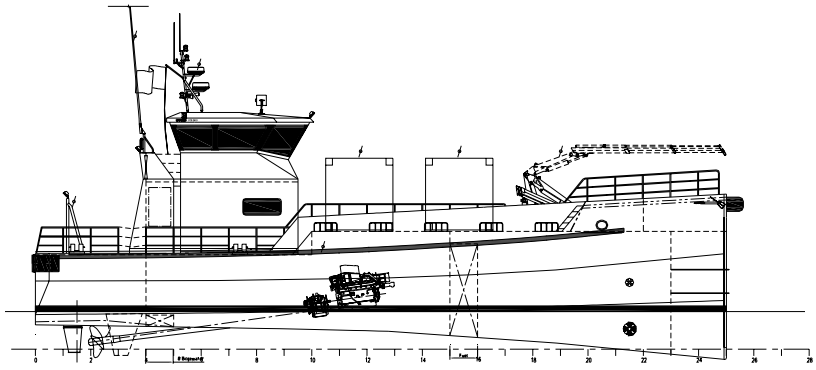
ACCOMMODATION

CREW	3 persons
TRANSFER CREW	Up to 12 persons
WHEELHOUSE	2 motion damping seat
MAIN DECK	12 seats, pantry, day room and toilet
AIR CONDITIONING	Air-conditioning in the wheelhouse and the passenger accommodation.

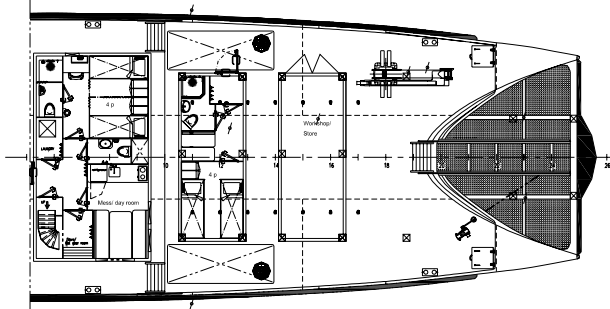
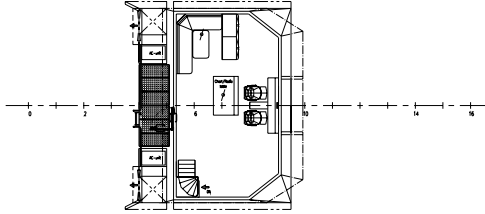
NAUTICAL AND COMMUNICATION EQUIPMENT

SEARCHLIGHT	1 x Pesch 1000W 230V
COMPASS	Ritchie, Navigator HB-71
ECHO SOUNDER	Raytheon ST60
VHF'S	1 x Sailor RT 5022 1 x Sailor RT 2048
VHF'S HANDHELD	2 x Sailor SP3520
RADAR	1 x Furuno, Navnet 3D
GPS	Furuno GP 320B
NAVTEX	Furuno NX 700A
AIS	Furuno FA 50
MF/HF	Furuno FS 1503

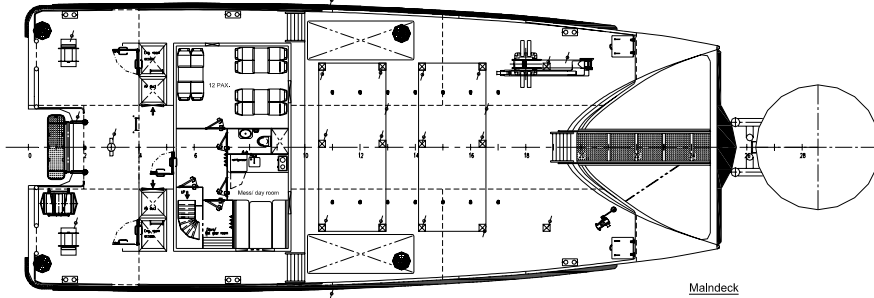
Note: Some of the items in this specification are optional. Specification and general arrangement can be changed without notice.



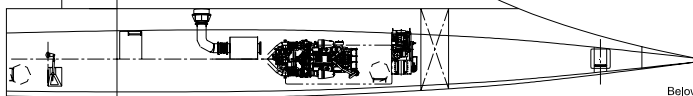
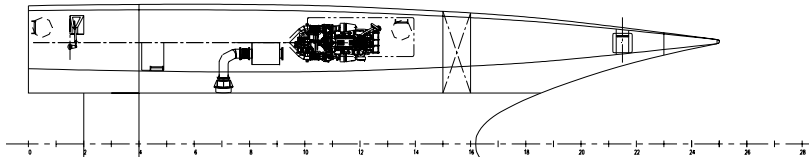
Profile



Alt. Maindeck lay out



Maindeck



Below maindeck

ITEMS MARKED  ARE OPTIONAL EQUIPMENT

DAMEN FAST CREW SUPPLIER[®] 2610

"FCS 2610"

for more info please contact:
 offshore@wind4ever.com

