



GENERAL

Class : ABS
 Notation : *A1, Self Elevating Unit, *AMS-NP, *DPS-1

PRINCIPAL DIMENSIONS

Length o.a. : 73.215m
 Beam o.a. : 55.78m
 Depth moulded : 7.62m
 Transit Draught : 5.5 m
 Hull Material : Welded Steel Construction, AH36
 No. of legs : 3
 Leg length : 128.946m
 Spud can diameter: 15.24m
 Spud can height : 4.572m

Design Environment

Air Temperature : -10°C min. to 40° ~max.
 Humidity: : 20% min. to 100%max.
 Wind Survival Operations: 100kts
 SW Temperature : 0°C min. to 32°
 Density : 1025 kg/m3 (For design purposes)
 Corresponding wave period: 13.5sec
 Wave Height :
 15.24m(Survival, of the water depth 300ft);
 16.46m(Survival, of the water depth 250ft)

CARGO CAPACITIES

Deck Load : 9000kips
 Pipe rack : 540lbs/ft²
 Main deck (outside pipe rack):540lbs/ft²
 Quarter's deck : 90lbs/ft²
 House Tops : 150lbs/ft²
 Machinery Spaces: 270lbs/ft²
 Sack stores : 540lbs/ft²

MACHINERY/PROPULSION

Engine and Generators:
 Main : 3 x GE 7FDM16, 2485kW, rated at 3500bHP,4160V, 3ph, 900rpm 60Hz , with 3 remote mounted radiators.
 Emergency : 1 x GE 7FDM8, 1240 kW, 4160V, 3ph, 900rpm, 60Hz
 Thrusters : 3 x Steer-prop Azimuth Thrusters, SP35, Rated at Maximum ABS continuous rating 2500KW at 1200RPM.
 Fuel Purifier : 250 GPH
 Oily Water Sep : 44 GPM, US10000
 Sewage Plant : 1 x 120 man capacity.
 Ballast System : Computerized pneumatic control
 FW Generator : 2 waste heat water-maker units (Alfa Laval), be each of a capacity of 8000GPD.
 Air Compressors : 3 x IR for rig air, the air dryer will be provided with a separate skid base.
 Cargo Pumps : 2x Fuel oil transfer pumps, 140 GPM, 150' THD, 10 HP, 1750 RPM
 2 x Fresh Water pumps, 10GPM@10'TDH
 1 x General Service 273m³/hr at 35m

FIRE FIGHTING & SAFETY

Fire Fighting : 2 x pumps 91 m³/hr X0.701MPa
 Life Boats : 2 x 120 person with davits
 1 x Motor Rescue Boat (6 men) with davit
 Life Rafts : 5 x 25 men

HELIDECK

1 x Heli-deck suitable for Sikorsky-S-92N helicopter

NAVIGATION EQUIPMENT

AIS : 1 x Furuno FA150
 GPS : 1 x Furuno GPA-017S
 DGPS : 1 x Furuno GP150D
 Magnetic Compass : 1 x Cassens & Plath
 Radar : 1 x X-band Furuno FAR-2127
 1 x S-band Furuno FAR-2137S/12
 Echo Sounder : 1 x Furuno FE-700
 Navtex : 1 x Furuno NX700P
 Speed Log : 1 x Furuno DS-80
 Anemometer : 1 x RM Young Wind Tracker

COMMUNICATION EQUIPMENT

One (1) telephone exchange
 One (1) public address system
 One (1) sound powered telephone systems
 Four (4) portable VHF transceivers
 Four (4) portable Motorola UHF transceivers
 Three (3) fixed radios for Navi. bridge and control room.
 Three (3) Wave-Net Interface Module for local net of computers
 Two (2) INMARSAT C Furuno Felcom 15
 One (1) INMARSAT F Sailor Fleet 77

DP SYSTEM

DP-1 system supplied by L-3.

ACCOMMODATION

The accommodation and mess facilities are fit for 120 persons. The accommodation shall follow the guidelines for UK HSE regulations and be able to house 120 men in 4-man cabins (Have Approached Flag state for release).

REFRIGERATED STORAGE CAPACITY

Cold store : 1 x 15 m³ walk in Freezer
 Chiller : 1 x 15 m³ walk in Chiller room
 Provisions : 1 x 30 m³ walk in Provisions room

DECK MACHINERY

Main Deck Crane : 2 x Slewing Crane (Each with capacity of Fixed lifting 45T@36.6m & Slewing 7T @ 39 m)
 Skidding Crane : 1 x crane main hoist 280T@Boom 55m; Auxiliary hoist 32T@Boom 58.8m
 4 Point Moor System : 4 x Single Drum winches, Brake Hold 60T, first layer
 Anchors : 4 x anchors, 7T ea
 Towing : Tow Brackets 320T MBL
 Tugger Winches : Pull Load 30 T at 4.5m/min, 14T at 9m/min
 Drum capacity 750m x Ø 38 mm SWR@ 12 layers



WORK-OVER RIG

Drill pipe rack sizing:	7,500m (24,800ft) 2800m (9,300ft) of 4½" DP and 4700-m(15,500-ft)of3½" DP.
Drill collar rack sizing:	78-m (260-ft) of 6" Drill Collars.
Derrick:	317-tonne (350-ton,700-kips),38.4m(127 ft) double racking.
Hook:	227 -ton (250ton 500-kips)
Rotary Load:	227-tonne (250-ton, 500 kips)
Set-back:	227-tonne (250-ton, 500 kips)
Combined Structure:	227-tonne (250-ton, 500 kips)
Draw-works:	LeTourneau@249-tonne(275-ton,550-kips) Model LDW550K, 10-lines 1,119 KW (1,500 hp) motor and Electric brake
Top Drive:	LeTourneau@227-ton(250-ton, 500-kips) Model L-DDTD
False Rotary Drive:	952.5-mm(37½-in) pass through rated at 227-tonne (250 tons)
Traveling Equipment:	227-tonne (250-ton 500 kips) Hook/block
Rig Instrumentation:	Petron® Electronic Touch screen Display with 25 parameters/alarms on floor and within offices.
Fluids Measurement:	Pit volume Total(PVT), Fluid Return Flow Increase (Flo-sho) and pump Strokes.
TDS Speed:	TDS speed indicator 0-240 rpm.
Weight Indicator:	Petron@ weight indicator
Air Hoists:	(2)Ingersoll Rand® Model BU7A winches rated at 454 kg(1000lbs).

WELL CONTROL EQUIPMENT BOP

DRILLTECH 346mm (13-5/8") 5M Annular Bop
 DRILLTECH 346mm, 690-bar (13-5/8" IOM) BOPs with pipe, blind and shear rams.
 Bell nipple capable of mating to annular.
 Two-way 346mm (13-5/8") flow cross with five (2)77.8m-690-bar (3-1/16",10M) manual and (2) 77.8m, 690-bar(3-1/16", 10M)hydraulic valves.
 (2) 20-tonne (22-ton, 44-kips) air driven BOP hoists, BOP transport dolly with IOM test stump.
 Portable 1,034-bar (15M) BOP pressure test unit with charts
 Hydraulic bolt torque tools for BOP
 1363-liters(360-gallons)CAD accumulator unit(1363-liters or 360-gallons from 24-bottles), (3) air pumps and one electric triplex pump.
 (2)Remote units 77.8mm, 690-bar(3-1/16"Diameter,10M) choke manifold with surge tank.
 Targeted turns, pressure gauge, divert to gas buster. Remote adjustable choke and two manual adjustable chokes.

CIRCULATING SYSTEM

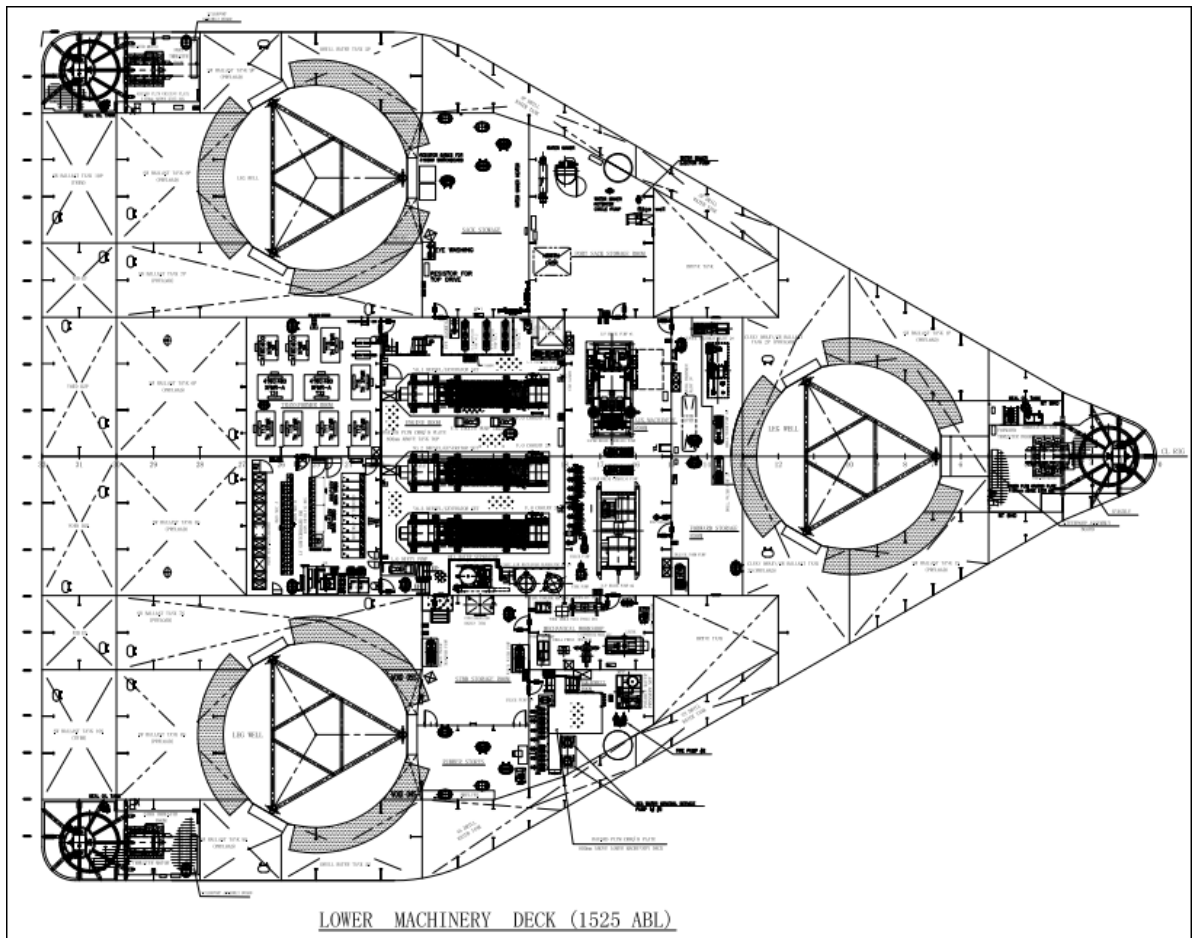
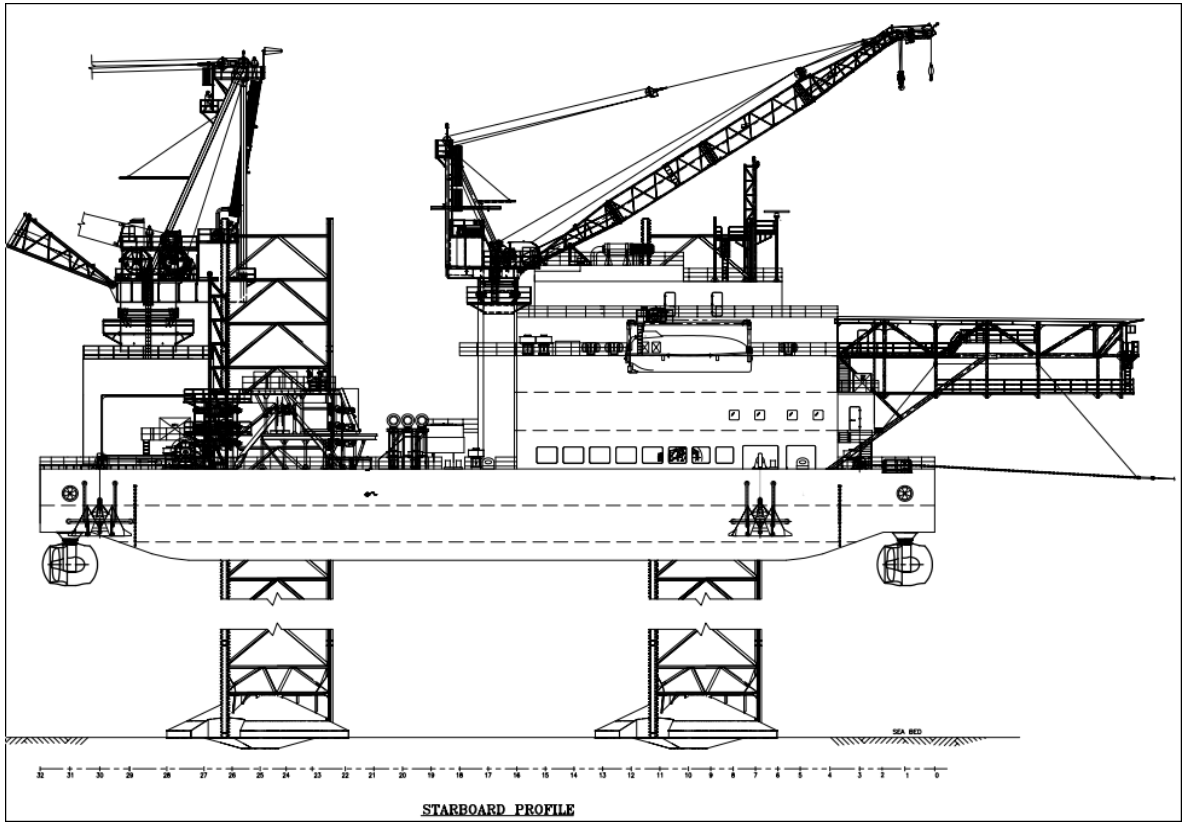
Well-bore Fluids Active Pit: 79-m3 (675-bbls) active circulating system with agitators and pumps Re-circulating, 5.8-m3 (50-bbl) trip tank with gauge Slug/pill tank,
 Mixing hopper- high jet type Mud/gas separator (poor-boy gas buster) with returns to tank.
 (1) Model KMC FZS225 Flow Line cleaner (200 m3/h) on Trip Tank.

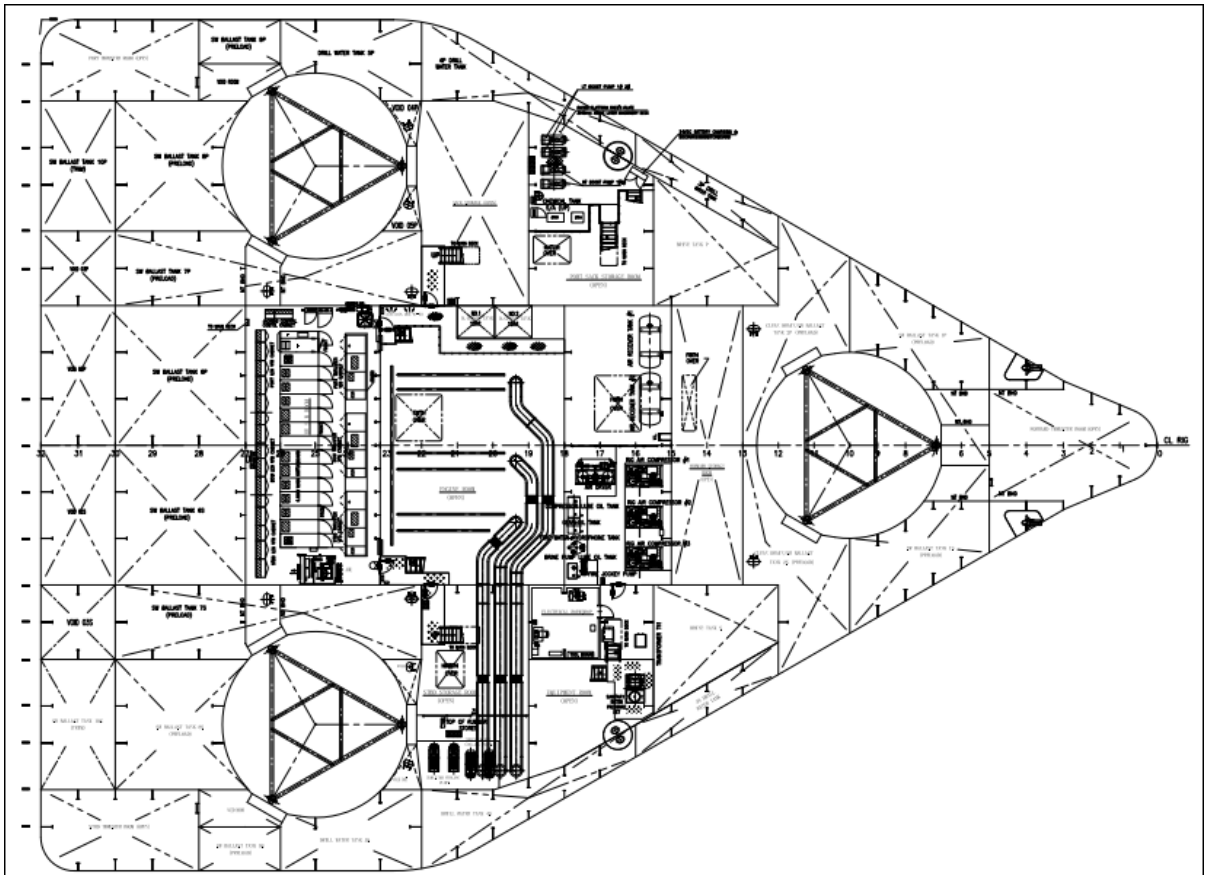
JACKING SYSTEM

There are three (3) F&G VFD-440 jacking assemblies for each leg, for a total of nine (9) assemblies. Each jacking assembly consists of six (6) pinions, each independently driven by an electric motor through its gear trains. Therefore there are 54 jacking units in total.
 •54 Jacking motors, with 30 HP, 575 V, 60 cycle, AC electric motors, equipped with a fail-safe electric brake
 •3 Switchgear cabinets
 •1 Central Console
 •1 portable push button box for jacking units including connecting wires
 •Installation bolts

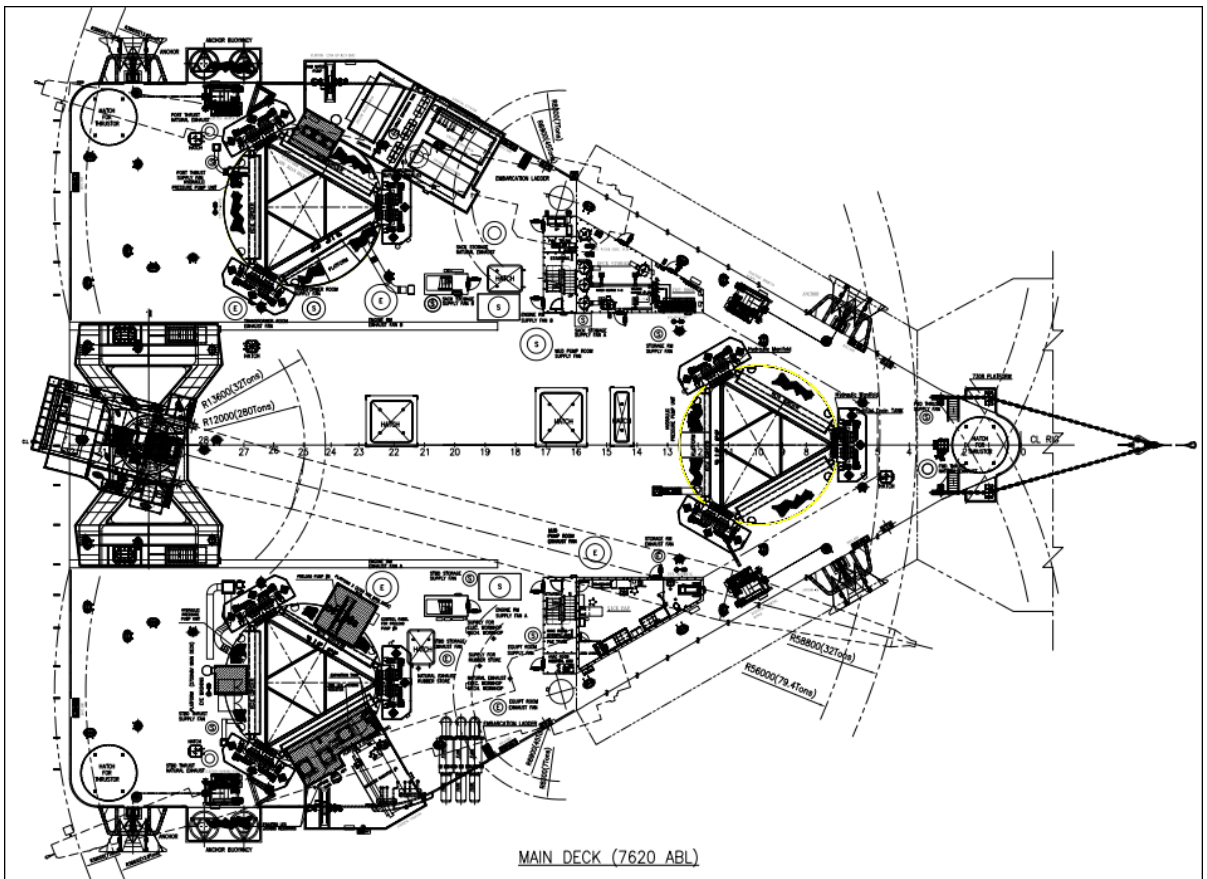
RACK CHOCK SYSTEM

The ESV is fitted with three (3) triangular legs. On each leg are welded three (3) F&G ARCOS racks. Each rack meshes with six (6) pinion units mounted in a frame. Each frame takes place in a jack house. The leg jacking system is designed to elevate the hull out of the water or lower the hull for floating, storm survival and transit conditions. It is able to:
 •Lift/lower the legs
 • Lift/lower the platform with normal elevated weight and with part of the preload
 •Hold the elevated weight with maximum preload





UPPER MACHINERY DECK (4570 ABL)



MAIN DECK (7620 ABL)